

600x1100 HORIZONTAL X / **54x1,6**

					
620	650	490	650	490	x
	1100x600	730x600	480x600	730x600	480x600
					1100(700*)x400

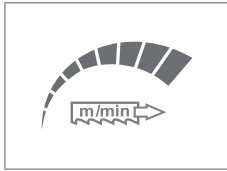
				
3x400V 50 Hz	5,5	20-100	9000x54x1,6	5200

Lmin	Lmax	B	Hmin	Hmax	V
4350	5050	2060	3000	2650	800

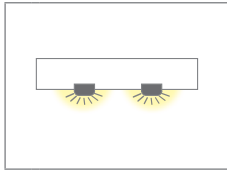


STANDARD OPTION

600x1100-F



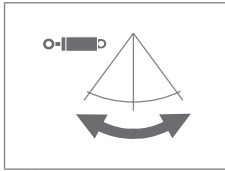
LED



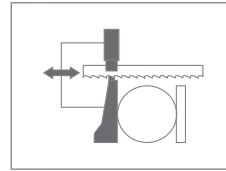
600x1100-PUD



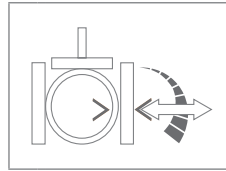
600x1100-PUH



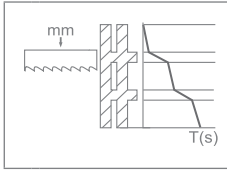
600x1100-HPV



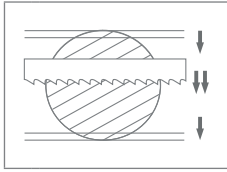
600x1100-RTS



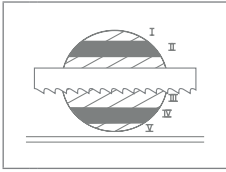
PEGAS-ARP



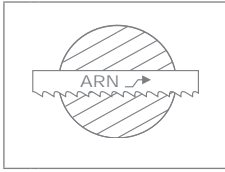
PEGAS-ASR



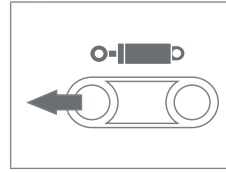
PEGAS-RZP



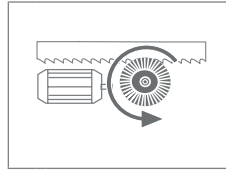
PEGAS ARN



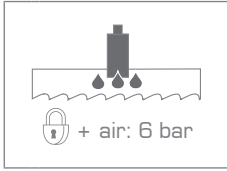
600x1100-NPH



600x1100-ECK



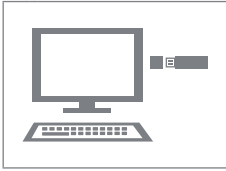
MINI LUBE 54



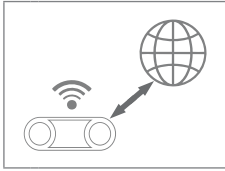
600x1100-ECS



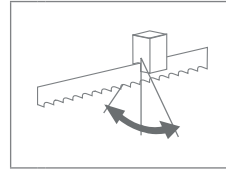
PCP



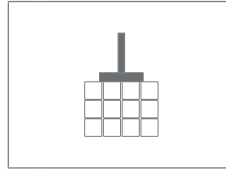
BLUEBOX



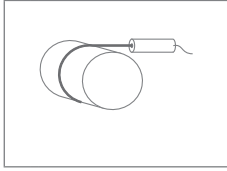
600-KKR



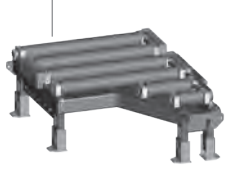
600x1100-HPR



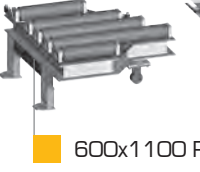
LASER LINE



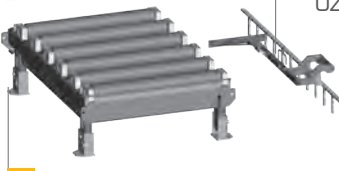
600x1100 RDP
600x1100 VZMP



600x1100 RDP-S



RDT 2000/1150



600x1100 RBR
+RBR



600x1100 RBR



600x1100 CS-H



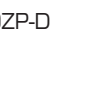
OZS
OZS-D



OZP



OZP-D



OZP-L
OZD-L



600x1100 DMV



600x1100 VZM



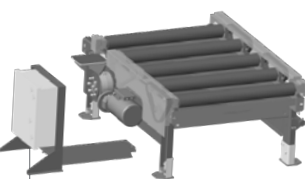
600x1100 RDZ-S



600x1100 RDZ



600x1100 VZMZ



RDM 2000/1150



RDML 2000/1150



RDT 1000/1150



CONTROL PANEL: SIEMENS (X)

600x1100 HORIZONTAL X

- výrobce si vyhrazuje právo provádět změny technických údajů, technické údaje odpovídají 1.1.2023 / producer has the right to make changes of technical data, technical data are valid on 1.1.2023

- pila na fotografii není vždy v základním provedení, uvedené rozměry odpovídají stroji v základním provedení / the machine in the picture is not always in the basic version, mentioned diameters are for machine in basic version

* doporučená hodnota. Při překročení doporučeného maximálního průměru není možné garantovat výkon pilového pásu!

/ recommended value. The blade performance cannot be guaranteed when the recommended diameter is exceeded!

☒ - řezání svazků bez horního přitlačení / cutting of the bundle without top clamping



PEGAS - GONDA s.r.o.
Čs.armády 322, 684 01 Slavkov u Brna,
CZECH REPUBLIC

www.pegas-gonda.cz
00420-544 221 125 (126) | pegas@gonda.cz